



1



2

## Our History



- The preschool program since Sep 2018
- The Infant/Toddler program since 2019
- The After School program since 2020



### Japanese-immersion preschool opens in historic Craigflower Schoolhouse

First-of-its-kind program operates in B.C.'s oldest school building

VANCOUVER ISLAND



Island's first Japanese immersion preschool aims to connect cultures

### First ever Japanese immersion preschool opens in Victoria

February 25, 2019 UPDATED



3

## Craigflower Schoolhouse



- Constructed in 1854, it is the oldest surviving school building in Western Canada.
- It was designated a national historic site of Canada in 1964 and is maintained as a BC Heritage Site.
- 1854年に建てられた、カナダ西部に現存する最古の学校建築
- 1964年に国の歴史的サイトとして認定され、BC Heritage Siteとして、保存管理されている。

We would like to acknowledge that the schoolhouse is within the traditional territories of the Lkwungen as Indigenous Coast Salish People, ancestor of the Esquimalt and Songhees Nations.



4

## Location & Transportation



5

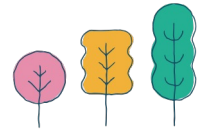
## School Building



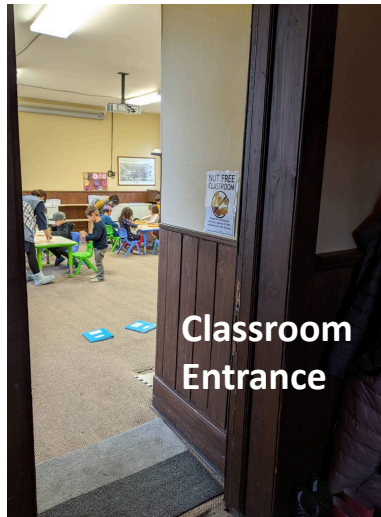
6



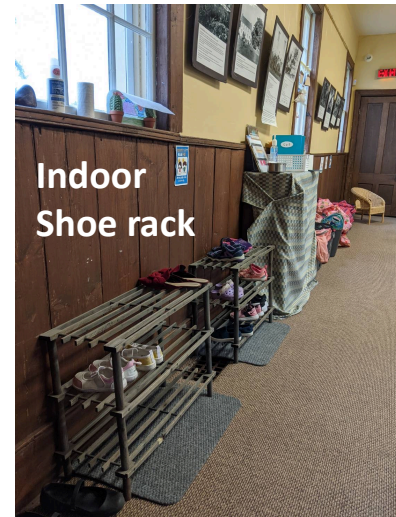
## Inside of Building



Mud room



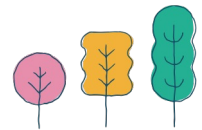
Classroom Entrance



Indoor Shoe rack

7

## Inside of Building



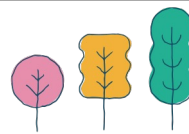
Individual Baskets



Classroom

8

## Inside of Building



Classroom Exit



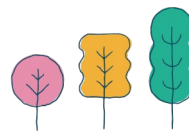
Hallway to Bathroom



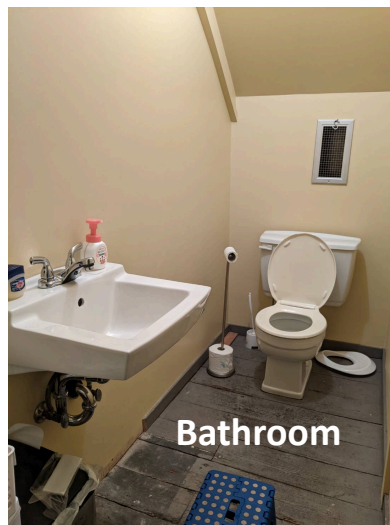
Bathroom Door

9

## Inside of Building



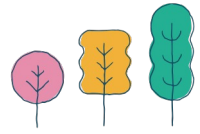
Bathroom



Bathroom

10

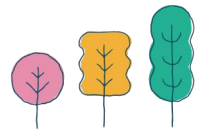
## Philosophy



- **HOLISTIC EDUCATION**  
We believe in the importance of well-rounded education.
- **LEARNING THROUGH PLAY**  
We value child-initiated free play to cultivate child's independence of mind.
- **DEVELOPMENTALLY APPROPRIATE CURRICULUM**  
We value individual differences and stimulate growth individually.
- **POSITIVE BEHAVIORAL GUIDANCE**  
We value positive guidance to respect every stage of child's growth.
- **MULTICULTURAL EDUCATION**  
We believe in the benefits bestowed by diversity.
- **全人教育**  
調和の取れた人間形成を大切にします。
- **遊びを通して学ぶ**  
子供の自主性を育てる自発的な自由遊びを大切にします。
- **成長に則したカリキュラム**  
個の違いを大切にし、成長を促すことを目指します。
- **ポジティブガイダンス**  
それぞれの発達段階を尊重し、否定を避け肯定的な指導を大切にします。
- **多文化教育**  
多文化・多様性社会がもたらす恩恵を子供たちに伝えることを大切にします。

11

## JLC Staff



### Educators

Yuri POMEROY (Head Teacher: ECE)  
Aya MIZUKAMI (ECE)  
Keiko PIMLOTT  
Miyoko ABE  
Noriko MASUMIYA (ECE)

### Director/Educator

Ayako INOUE

### 教師

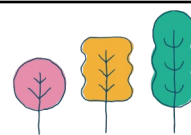
ポメロイ 百合 (園長: 保育士)  
水上 綾 (保育士)  
ピムロット 恵子  
安部 美代子  
増宮 紀子(保育士)

### スクールディレクター 兼 教師

井上文子

12

## JLC Monthly Theme



We use Monthly Themes for activities in all JLC programs.

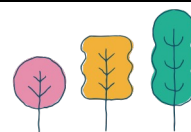
To make sure;

- Children are introduced to new vocabulary across subjects throughout the year.
- They have opportunities to explore a wide range of interests.
- They revisit topics every year, deepening their understanding as they grow.

<b>September</b>	Family & Friends
<b>October</b>	Food
<b>November</b>	Animals
<b>December</b>	Culture & Custom
<b>January</b>	
<b>February</b>	Body, Health, Sports
<b>March</b>	Work & Job
<b>April</b>	Earth & Space
<b>May</b>	Plants
<b>June</b>	World & Diversity

13

## Our Programs



Centered on preschool program, we support Japanese education from 0 to 12 years old.

1 <sup>st</sup> Stage	2 <sup>nd</sup> Stage	3 <sup>rd</sup> Stage
<b>Infant/Toddler</b> (Age 0~3) with parents <ul style="list-style-type: none"> <li>• Japanese Bilingual Play</li> <li>• Preschool Experience Class</li> </ul>	<b>Preschool</b> (Age 3~5) <p>Licensed Group Childcare</p> <ul style="list-style-type: none"> <li>• Full-Day Program (Half-Day Program)</li> <li>• Summer Camp</li> </ul>	<b>School Age</b> (Kinder~Age 12) <p>Licensed Group Childcare</p> <ul style="list-style-type: none"> <li>• After-School Program</li> <li>• Spring/Summer Camp</li> </ul>

14



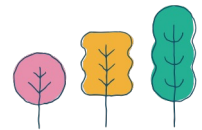
## Our Programs



Program	Location	Registration	Dates	Daily Hours
Preschool	Schoolhouse	Annual	Monday to Friday	8:30-15:00
Summer Camp (Preschool)	Schoolhouse	Weekly	Monday to Friday	9:00-15:00
After School	Schoolhouse	Annual	Tue, Wed, Thu	15:30-17:30
Summer Camp (School Age)	Schoolhouse	Weekly	Monday to Friday	9:00-15:00
Infant/Toddler	Gorge Pavilion Schoolhouse	Class/Bundle	Wed Sat	10:00-11:30

15

## Japanese Preschool Program

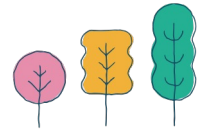


- Japanese Only Policy
- Japanese Toys & Materials
- Child Initiated Play
- Theme Learning  
(Story time, song, dance, game, art & craft etc.)
- Exercise
- Multicultural Seasonal Events
- Japanese Culture Experience
- 日本語オンリーポリシー
- 日本語の本や教材
- 子どもの自発的な自由遊び
- テーマラーニング  
(読み聞かせ、歌、手遊び、ダンス、ゲーム、アート、工作など)
- 運動
- 多文化の季節イベント
- 日本文化の体験

16



## Preschool Daily Schedule Model

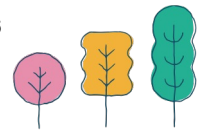


Time	Activities
8:30	<b>Arrival</b> Free Play Time
9:30	Morning Greeting & Songs Body Movement Activity Theme Learning Activities (Story time, Craft, etc.)
10:30	<b>Snack Time</b>
11:00	Outdoor activity (Backyard play, neighborhood walk, etc.)
12:00	<b>Lunch Time</b> (Quiet Time)
13:00	Circle Time
13:30	Activities (Outdoor Play, Craft, etc.)
15:00	Goodbye Greeting & Songs <b>Dismissal</b>

17

Updated on January 30, 2026

## Program Options & Fee



<b>Preschool</b>			<b>Our Monthly Fee</b>		<b>CCFRI* Funds</b>		<b>YOUR Monthly FEE</b>		<b>Late Pickup (Optional)</b>	<b>Note</b>
<b>Regular Program (Sep-Jun)</b>			<b>Age 3-5</b>	<b>Age 2.5</b>	<b>Age 3-5</b>	<b>Age 2.5</b>	<b>Age 3-5</b>	<b>Age 2.5</b>		
(Sep-Jun) Full: 9:00-15:00 Half: 9:00-12:00	<b>5 days /week</b>	<b>Full Day</b>	\$1,050.00	\$1,112.00	(545.00)	(900.00)	<b>\$505.00</b>	<b>\$212.00</b>	\$65.00 /month	<b>1.</b> Late pick-up (by 3:30 p.m.) is optional and not included in the program. <b>2.</b> Children <b>over 2.5 years</b> old are eligible for registration. <b>3.</b> Half-day options are available once all requirements are met. Availability may be limited, as full-time registration is given priority.
		<b>Half Day</b>	\$630.00	\$670.00	(272.50)	(450.00)	\$357.50	\$220.00		
	<b>4 days /week</b>	<b>Full Day</b>	\$871.00	\$930.00	(436.00)	(720.00)	<b>\$435.00</b>	<b>\$210.00</b>	\$52.00 /month	
		<b>Half Day</b>	\$538.00	\$580.00	(218.00)	(360.00)	\$320.00	\$220.00		
	<b>3 days /week</b>	<b>Full Day</b>	\$684.00	\$740.00	(327.00)	(540.00)	<b>\$357.00</b>	<b>\$200.00</b>	\$39.00 /month	
		<b>Half Day</b>	\$430.00	\$470.00	(163.50)	(270.00)	\$266.50	\$200.00		
	<b>2 days /week</b>	<b>Full Day</b>	\$480.00	\$520.00	(218.00)	(360.00)	<b>\$262.00</b>	<b>\$160.00</b>	\$30.00 /month	
		<b>Half Day</b>	\$300.00	\$330.00	(109.00)	(180.00)	\$191.00	\$150.00		
<b>Summer Camp (Jul-Aug)</b>			<b>Our Weekly Fee</b>		<b>CCFRI* Funds</b>		<b>YOUR Weekly FEE</b>			<b>Note</b>
Mon-Fri Full: 9:00-15:00 Half: 9:00-12:00	<b>Current Students</b>	<b>Full Day</b>	\$260.00		(136.00)		<b>\$124.00</b>			<b>1.</b> The half-day option may be limited, as full-time registration is given priority. <b>2.</b> Camp registration is only available for the <b>age 3+</b> .
		<b>Half Day</b>	\$160.00		(68.00)		\$92.00			
	<b>External Students</b>	<b>Full Day</b>	\$270.00		(136.00)		<b>\$134.00</b>			
		<b>Half Day</b>	\$170.00		(68.00)		\$102.00			

### Basic Attendance Day

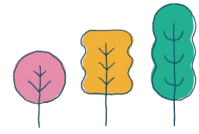
- 2-days/week: Tuesday and Thursday
- 3-days/week: Monday, Wednesday and Friday
- 4-days/week: the 3-days/week + Tuesday or Thursday

Exceptions may be available to accommodate special circumstances, depending on availability. Please contact us for more information.

\*CCFRI: Child Care Fee Reduction Initiative  
All fees above are subject to change along with the CCFRI policy.

28

# Requirements



PROGRAM		REQUIREMENTS
Full Day	5 days /week	<ul style="list-style-type: none"> <li>Students are expected to follow “Japanese Only Policy”.</li> <li>At least one family member is willing to learn Japanese along with the student and speak in Japanese at home as much as possible.</li> </ul>
	3-4 days /week	<ul style="list-style-type: none"> <li>Students are expected to follow “Japanese Only Policy”.</li> <li>Students are expected to have prior Japanese language experience/skills at the time of entry.</li> <li>At least one of family members can communicate in Japanese at home.</li> </ul>
Half-Day		<ul style="list-style-type: none"> <li>Students are able to communicate in Japanese.</li> <li>The minimum number of attendance days per week may vary from child to child, depending on their circumstances.</li> </ul>

29

## esiKidz (School Online System)



**esiKidz** is a platform that streamlines communication and payments between families and childcare facilities in one secure system.

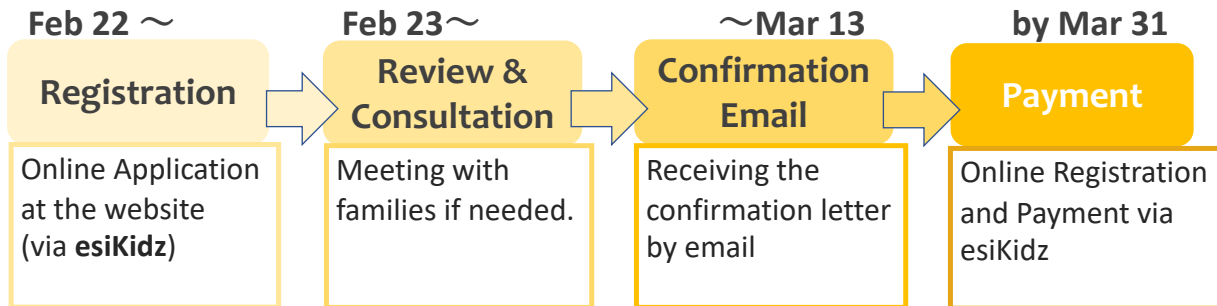
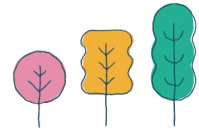
- Registration
- Payments
- Communication



All families require to complete account setup for the esiKidz system to register for JLC programs with esiKizs App (for smartphones) or the esiKidz Parent Web Portal (for computers).

30

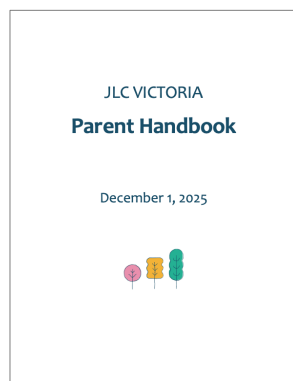
## Important Dates for Registration



*As soon as your online registration and payment is confirmed, your seat will be reserved.*

31

## Parent Handbook & Agreement of Child Care

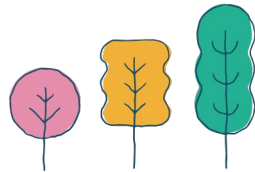


32

## Q & A

Let us know if you have any questions.

[contact@jlc victoria.com](mailto:contact@jlc victoria.com)



**JLC VICTORIA**